

Johannes Sperling
Service Center Research Data

Data management plans

Focus: Horizon Europe

Lessons in Open Science
28.09.2021

Data Management Planning

Agenda

1. **Overview:** RDM, DMP, Horizon Europe
2. **Open Data?** How open should your data be?
3. **FAIR:** how to manage your data so that it is re-usable?
4. **How to do?** Some general advice
5. **Templates etc:** Material, services and resources
6. **Q & A**

Overview



„Research data management — The process within the research lifecycle that includes the **organisation, storage, preservation, security, quality assurance**, allocation of **persistent identifiers** and rules and procedures for **sharing of data** including licensing.“

(Horizon Europe Model Grant Agreement Annex 5)

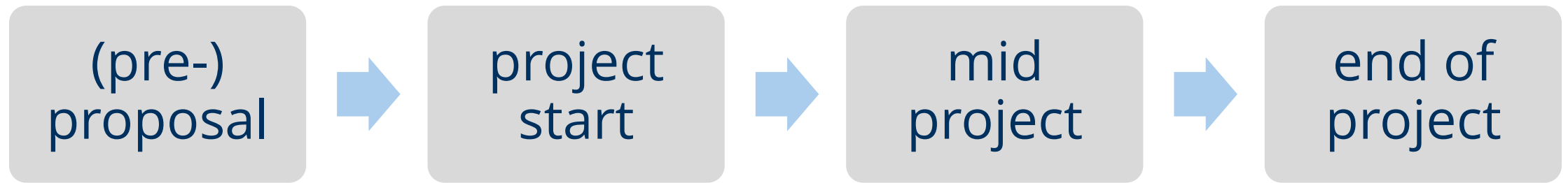
Question to you

What can a DMP „do for you“?

→ Please write down 1-2 key words in the chat

© PantherMedia / Dmitry Shironosov

Typical deliverables



short
text sections
on OSP & RDM

Initial **DMP**

Updated
DMP

Dataset **DOI**
Final DMP

Proposal template Part B

Excellence - 1.2 Methodology

- Open science practices (up to 1 page)
- Research data management and management of other research outputs (max. 1 page)

Implementation

- 3.1 Work plan and resources
- 3.2 Capacity of participants and consortium as a whole

Proposal template Part B - Excellence - 1.2 Methodology

- Open science practices (up to 1 page)
 - mandatory
 - **immediate open access** to peer-reviewed publications
 - besides journals, additional archiving at trusted **repositories**
 - providing **access to research data** acc. FAIR principles
 - non-mandatory
 - pre-registration, registered reports, pre-prints
 - open peer review
 - other research outputs
 - citizen science, civil society and end-user engagement

Open Data

What is meant by „Data“

Research Data,
Documentation

Other research outputs,

Common assets for research & innovation

What is meant by „Open“



- **“as open as possible as closed as necessary”**
 - OA = standard
 - exceptions possible, but no general opt-out anymore since 2020
 - degree of openness is relevant to evaluation
 - depends on the disciplines (and reviewers, of course)

What is meant by „Open“



- if open access is not provided (to some or all data)
 - must be **justified**
 - still have to apply **FAIR** principles

New as of Work Program 2021/22:

- have to provide **access to validate** the conclusions of scientific publications
- in case of a **public emergency**, have to provide access **immediately** under CC BY, CC0 or (if open access would be against legitimate interests) grant access under fair and reasonable conditions

FAIR principles

Proposal template Part B - Excellence - 1.2 Methodology

- Research data management and management of other research outputs (max. 1 page)
 - Data description
 - Management of data/other
 - F
 - A
 - I
 - R
 - Costs and person/team responsible

FAIR principles

1. Making data **findable**

FAIR principles

2. Making data **accessible**

FAIR principles

3. Making data **interoperable**

FAIR principles

4. Making data **re-usable**

How to do

Some general advice



© PantherMedia / Dmitry Shironosov



Proposal template Part B - Implementation

- 3.1 Work plan and resources
 - Research data management
 - Deliverables: DMPs, Data, Other
 - (staff) resources
 - if applicable: risks

Proposal template Part B - Implementation

- 3.2 Capacity of participants and consortium as a whole
 - expertise in open science practices
 - access to critical infrastructure
 - Relevant OA publications, data, software with DOIs/PIDs
- → also under PART A – (Individual) Researchers involved

Templates & other help

Data management planning – key principles and steps

Think about **what data** you will process
and **who will use** your data: just you?
Your group? Other partners?
Open data publication?



Spending a little time **upfront** can save
a lot of time later on.
Start with **getting to know** about research
data management and relevant policies.



Be realistic: strike a **balance** between
doing too much and too little.
Use **help** by others (e.g. discipline-specific
guidance, examples, support by service staff)

Write/adopt your plan.
There's no single right way to do it;
establish a system that **works for you**.



DMP-Template EU Horizon Europe:

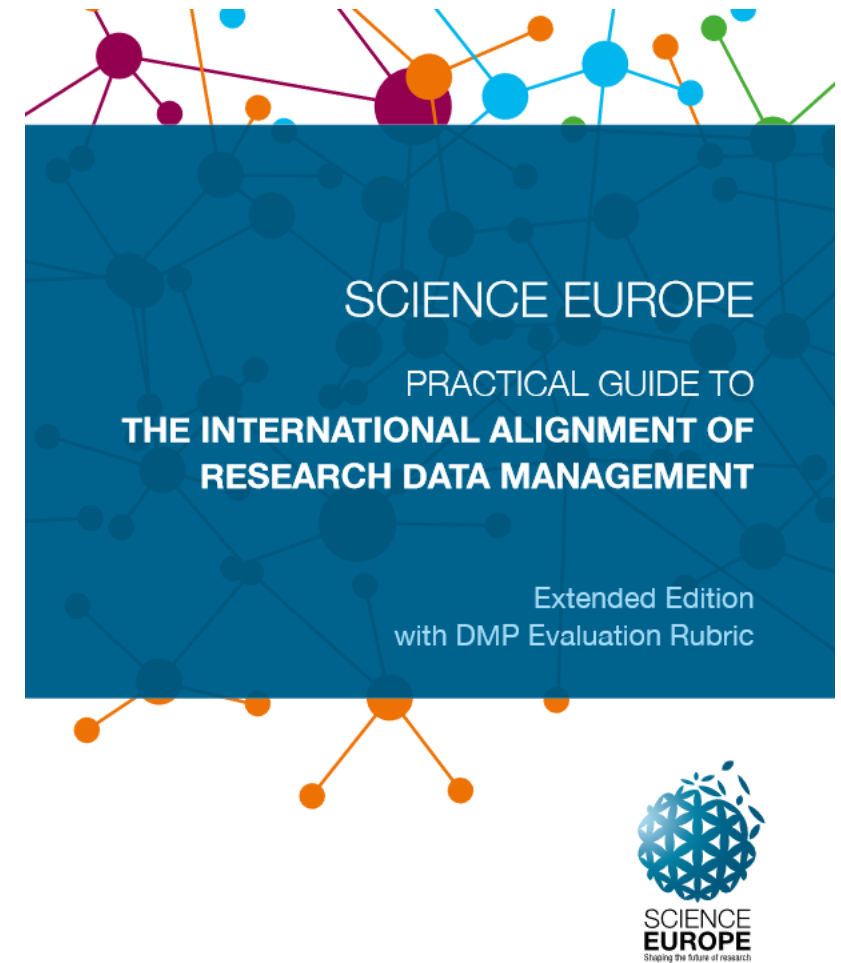
1. Data **summary**
2. **FAIR** Data
 - F**indable
 - A**ccessible
 - I**nteroperable
 - R**e-usable
3. Other research **outputs**
4. Allocation of **resources**
5. Data **security**
6. **Ethics**
7. **Other** issues



Source: https://ec.europa.eu/info/funding-tenders/opportunities/docs/2021-2027/horizon/temp-form/report/data-management-plan-template_he_en.docx

DMP-Template Science Europe:

1. **Data description** and collection or re-use of existing data
2. **Documentation** and data **quality**
3. **Storage** and backup during the research process
4. **Legal and ethical** requirements
5. **Data sharing** and long-term **preservation**
6. **Responsibilities** and **resources**



Source: <https://www.scienceeurope.org/our-resources/practical-guide-to-the-international-alignment-of-research-data-management/> and DOI: [10.5281/zenodo.4915861](https://doi.org/10.5281/zenodo.4915861)

Resources



- Horizon Europe [Programme Guide](#)
- Science Europe Practical Guide:
<https://www.scienceeurope.org/our-resources/practical-guide-to-the-international-alignment-of-research-data-management/>
- ERC Information on Open Data and Data Management Plans
https://erc.europa.eu/sites/default/files/document/file/ERC_info_document-Open_Research_Data_and_Data_Management_Plans.pdf
- <https://librarycarpentry.org/Top-10-FAIR/>
- <https://www.forschungsdaten.info/praxis-kompakt/english-pages/>
- Tool Argos: <https://argos.openaire.eu/splash/>
- Tool DMPonline: <https://dmponline.dcc.ac.uk/>

discipline-specific

Service Center Research Data



Service Center Research Data

Services for data management planning in Dresden

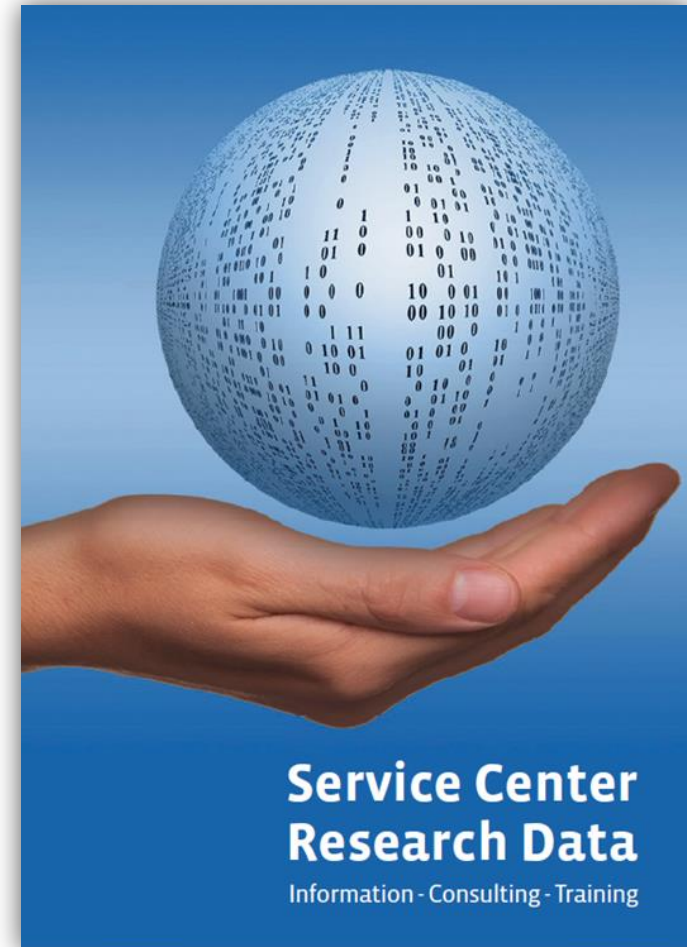
- **Consulting** (especially for collaborative projects)
- **Review** of text drafts (web form)
- Generation of **text modules** (web form)



Johannes Sperling

kontaktstelle-forschungsdaten@tu-dresden.de

<https://tu-dresden.de/kontaktstelle-forschungsdaten>



**Service Center
Research Data**

Information - Consulting - Training